

\$1,050,000 - 1946 N Creek Drive, Mount Pleasant

MLS® #18006766

\$1,050,000

5 Bedroom, 4.00 Bathroom, 3,662 sqft
Residential on 0.37 Acres

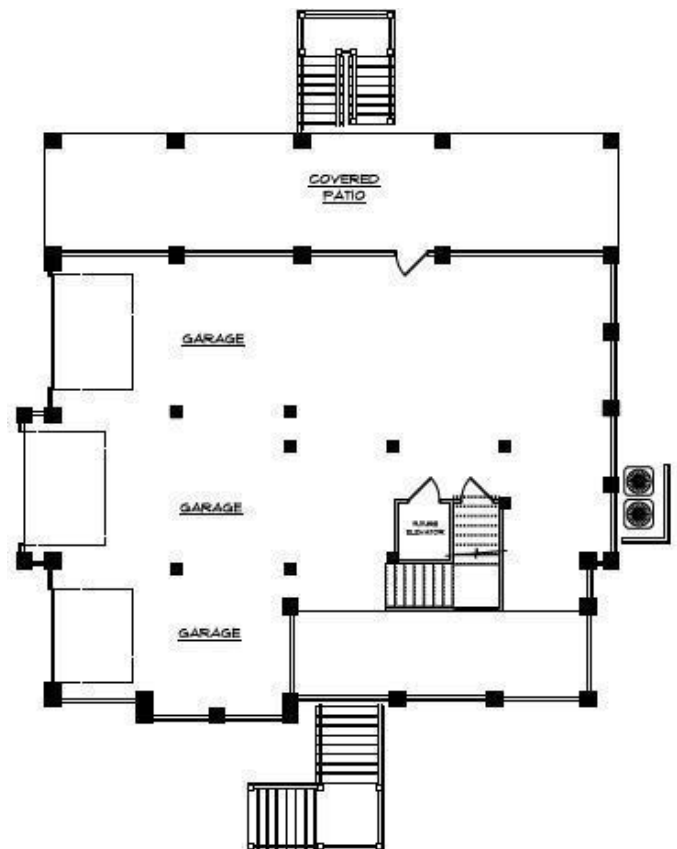
Rivertowne Country Club, Mount Pleasant, SC

New construction pick everything in this Engineered Green home. Quality and efficiency are the #1 priority for this great home to be built by Nest Homes. A RARE OPPORTUNITY to find a remaining available lot in the Rivertowne Country Club- The property is situated on Cul-du-sac and backs to a wooded grove of coastal forest. Ample building envelopes allow the home to nestle among the trees creating a sense that the home as been there for years. This lot is also a proposed construction that will take full advantage of the whole lot. Ask about the details of the home and the construction. FEATURES: The neighborhood has all access to the Rivertowne amenities. Location for a pool.

Built in 2018

Essential Information

MLS® #	18006766
Price	\$1,050,000
Bedrooms	5
Bathrooms	4.00
Full Baths	4
Square Footage	3,662
Acres	0.37
Year Built	2018
Type	Residential
Sub-Type	Single Family Detached



Ground Floor - REVIEW

Style	Traditional
Status	Active Contingent

Community Information

Address	1946 N Creek Drive
Area	41 - Mt Pleasant N of IOP Connector
Subdivision	Rivertowne Country Club
City	Mount Pleasant
County	Charleston
State	SC
Zip Code	29466

Amenities

Amenities	Boat Storage, Club House, Club Membership Available, Dock Facilities, Exercise Area, Play Park, Tennis Court, Walk Jog Trails
Features	Energy Star Air Filtration, Energy Star Appliance, Energy Star Central Heat/Air, Energy Star Insul
Parking Spaces	4
Parking	Attached, 4 Car Garage
# of Garages	4
Garages	Attached, 4 Car Garage

Interior

Interior	Ceramic Tile, Wall to Wall Carpet, Wood
Interior Features	Ceilings - 9'+, Ceiling - Cathedral/Vaulted, Garden Tub/Shower, Kitchen Island, Ceiling - Smooth, Ceiling - Tray
Heating	Heat Pump
Cooling	Central
Fireplace	Yes
Fireplaces	Great Rm, One
Stories	3 Story

Exterior

Exterior	Cement Plank
Exterior Features	Deck, Elevator Shaft, Patio, Shared Dock
Lot Description	Corner, Wooded, 0 - .5 Acre
Roof	Architectural, Asphalt Shingle
Construction	Proposed Construction
Foundation	Elev Construction

School Information

Elementary	Jennie Moore
Middle	Laing
High	Wando

Additional Information

Days on Website 1288

Listing Details

Listing Office Landcrafters Inc



The data relating to real estate for sale on this web site comes in part from the Broker ReciprocitySM Program of the Charleston Trident Multiple Listing Service. Real estate listings held by brokerage firms other than Keller Williams are marked with the Broker ReciprocitySM logo or the Broker ReciprocitySM thumbnail logo (a little black house) and detailed information about them includes the name of the listing brokers.

The broker providing these data believes them to be correct, but advises interested parties to confirm them before relying on them in a purchase decision.

Copyright 2021 Charleston Trident Multiple Listing Service, Inc. All rights reserved.