

# \$3,950,000 - 3907 Palm Boulevard, Isle of Palms

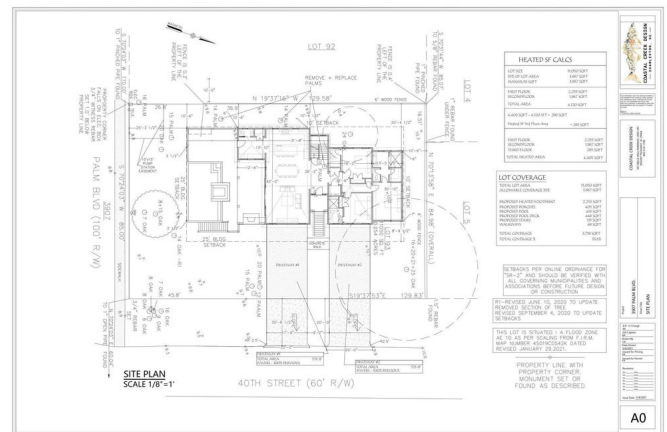
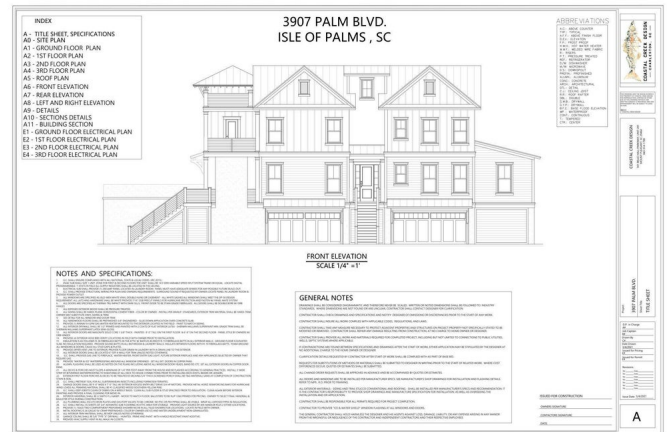
MLS® #21007977

## \$3,950,000

8 Bedroom, 9.00 Bathroom, 4,403 sqft  
Residential on 0.25 Acres

None, Isle of Palms, SC

Spectacular 2ND ROW contemporary Lowcountry home with breathtaking ocean Views. Estimated Completion December, 2021. Foundation Work started in March, 2021. This open concept is designed to be enjoyed as a luxury residence with the ability to generate substantial rental income. An elevated pool on the rear patio may be added for an additional \$100,000. The kitchen opens out to an expansive great room which continues outside to a full length piazza to soak in the ocean views. Luxury finishes include quartz countertops, custom cabinets, professional grade appliances, boutique lighting, wide plank wood flooring, shiplap accents, and designer tile. Upstairs are dual master bedrooms, excellent for multi family use. The master bath features his and her vanities, a large walk in closet, and an oversized shower. Exterior finishings include 2 full length piazzas, a metal roof, ANDERSEN high impact windows, railings, and Garappa decking. The elevated pool if selected is located on the 1st floor for breathtaking views. A heated pool creates the potential for significant rental income throughout the year. ... a pro forma is included in the documents section on the listing. The remaining 6 bedrooms have ample bathrooms and include a Bunk Room where the kids can pile in and escape their parents. Early birds receive input into selecting finishes. MSP Custom Homes has decades of experience building on the Island with an impressive portfolio of luxury



homes.

Built in 1952

### **Essential Information**

MLS® #	21007977
Price	\$3,950,000
Bedrooms	8
Bathrooms	9.00
Full Baths	8
Half Baths	1
Square Footage	4,403
Acres	0.25
Year Built	1952
Type	Residential
Sub-Type	Single Family Detached
Style	Contemporary
Status	Active Contingent

### **Community Information**

Address	3907 Palm Boulevard
Area	44 - Isle of Palms
Subdivision	None
City	Isle of Palms
County	Charleston
State	SC
Zip Code	29451

### **Amenities**

Amenities	Cable Avail, Trash Pickup
Features	Tankless Water Heater
Parking Spaces	4
Parking	Attached, 4 Car Garage
# of Garages	4
Garages	Attached, 4 Car Garage
Has Pool	Yes
Pool	Private Pool

### **Interior**

Interior	Ceramic Tile, Wood
Interior Features	Ceilings - 9'+, Elevator, Garden Tub/Shower, Kitchen Island, Ceiling - Smooth, Walk-In Closets
Heating	Electric, Heat Pump
Cooling	Central
Fireplace	Yes
Fireplaces	One, Other
Stories	2 Story

## Exterior

Exterior	Cement Plank
Exterior Features	Full Fr Prch, Privacy Fenc, Pool - Elevated, Strm Windows, Balcony
Lot Description	Ocean View
Construction	Under Construction

## School Information

Elementary	Sullivan's Island
Middle	Moultrie
High	Wando

## Additional Information

Days on Website 48

## Listing Details

Listing Office St. Germain Properties LLC



The data relating to real estate for sale on this web site comes in part from the Broker ReciprocitySM Program of the Charleston Trident Multiple Listing Service. Real estate listings held by brokerage firms other than Keller Williams are marked with the Broker ReciprocitySM logo or the Broker ReciprocitySM thumbnail logo (a little black house) and detailed information about them includes the name of the listing brokers.

The broker providing these data believes them to be correct, but advises interested parties to confirm them before relying on them in a purchase decision.

Copyright 2021 Charleston Trident Multiple Listing Service, Inc. All rights reserved.